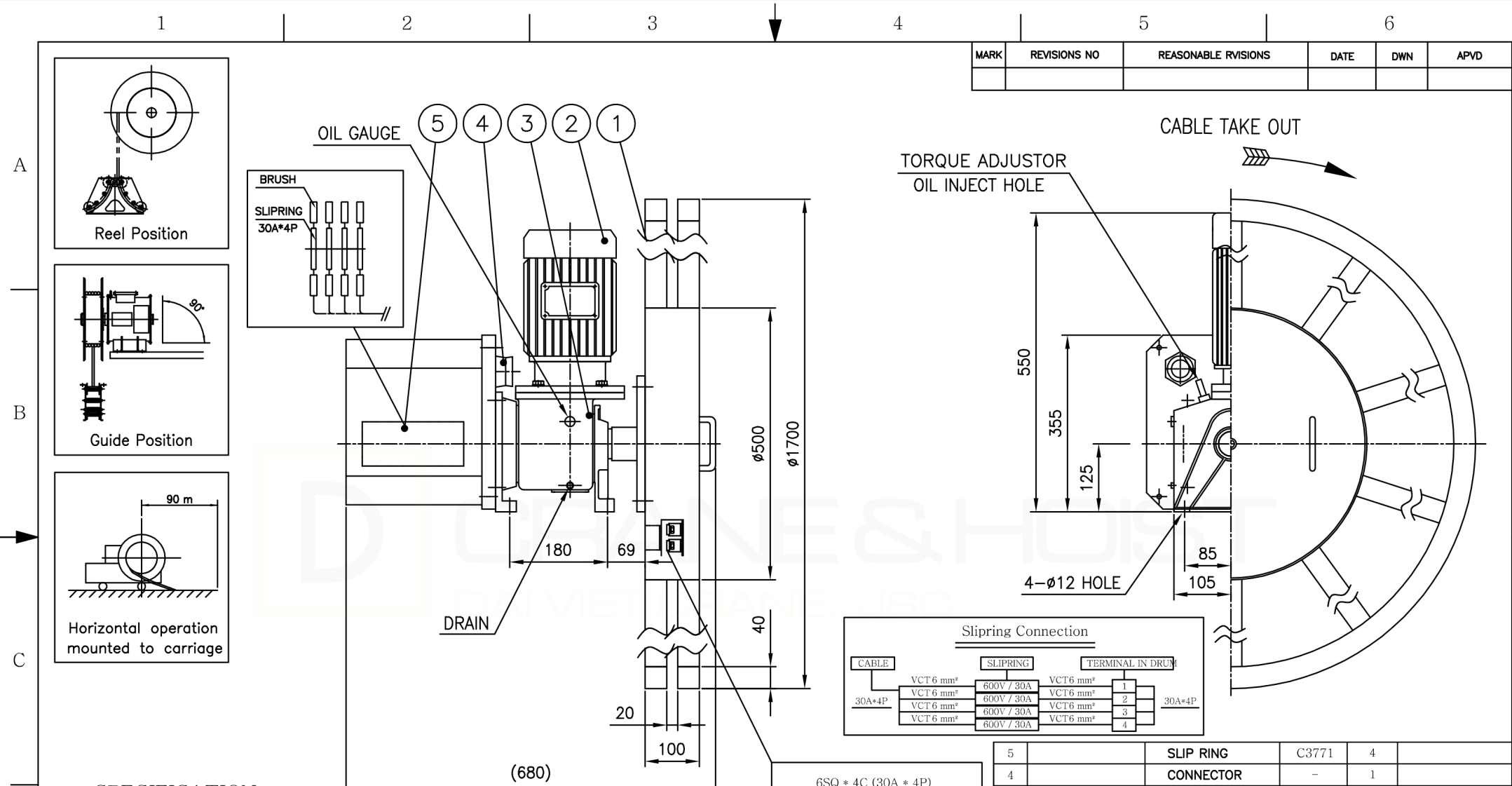


MARK	REVISIONS NO	REASONABLE RVISIONS	DATE	DWN	APVD



SPECIFICATION

- | | | |
|---------------------------------------|----------------------|--|
| 1. Cable | 4. Power Source | : AC380V*3ph*50Hz |
| o PNCT 6 sq x 4c | 5. Slip Ring | : 30A x 4P |
| o Size : approx. 17.6mm | 6. Setting Height | : Max. 1.5 m from G.L. |
| o Weight : approx. 0.52 kg/m | 7. Acceleration Time | : 3 sec. |
| o Length : 95M | 8. Feeding Method | : Oneway Feeding Type |
| 2. Traveling Length : Traveling _ 90M | 9. Paint Color | : DRUM _ MUNSELL No. 7.5 BG6/1.5 (Out Door-60um) |
| 3. Traveling Speed : max. 20 M/MIN | | : BODY _ MUNSELL No. 7.5 BG6/1.5 (Out Door-60um) |
| 4. Winding Torque : 4 Kg.m | 10. Q' ty | : 1 Set |

5	SLIP RING	C3771	4	
4	CONNECTOR	-	1	
3	REDUCER	-	1	
2	MOTOR	KOREEL	1	0.75kw * 6P
1	DRUM	SPHC	1	

ITEM	PARTS NO.	PART NAME	MATERIAL	Q'TY	REMARKS
PROJECTION	3rd ANGLE	DIMENSIONS		SCALE	MODEL
CUSTOMER	VNID	METRIC (mm)		1 : 1	SF1-695-4
MODEL COLOR	-	DRAWING		DESIGN	PART NAME
		DESIGN	CHECK	APPROVAL	ASS'Y
SIGN	J.J.H	DRAWING		DESIGN	PART NO.
DATE	2015.4.27	DRAWING		DESIGN	Z336-1000

